

MONTHLY MEMBERSHIP PROGRESS REPORT

LOCATION PENNSYLVANIA

District 14 L

Results as of: 6/30/2023

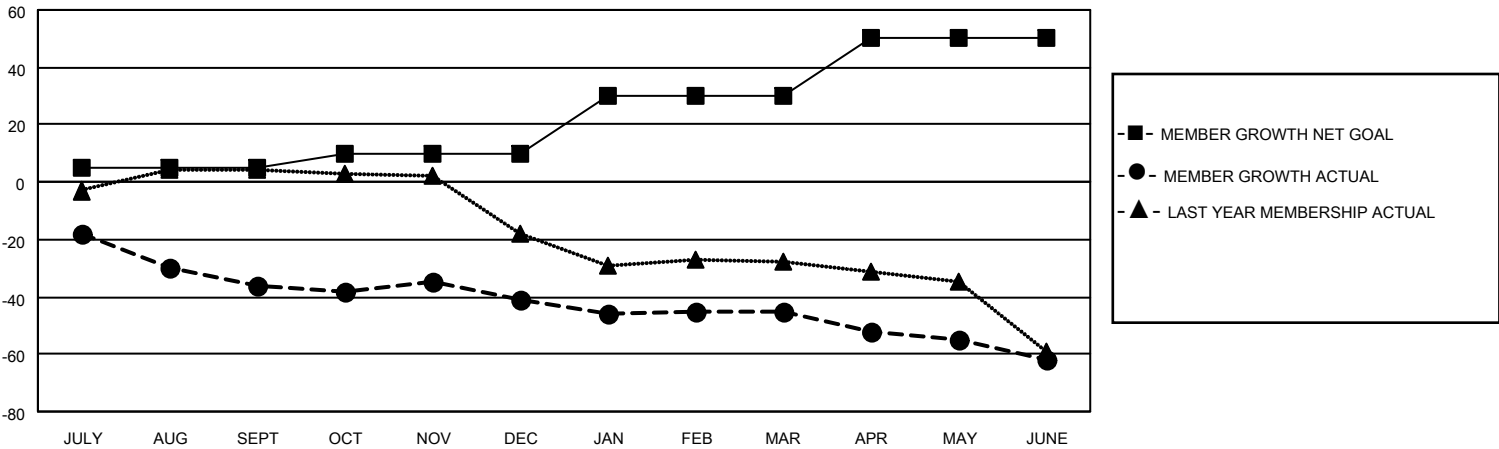
Clubs			
RESULTS FOR 2022-2023			
QUARTER	NEW CLUB GOAL	NEW CLUBS	DROPPED CLUBS
JULY/AUG/SEPT	0	0	0
OCT/NOV/DEC	0	0	0
JAN/FEB/MAR	1	0	0
APR/MAY/JUNE	1	0	0

Members			
RESULTS FOR 2022-2023			
QUARTER	MEMBER GROWTH NET GOAL	MEMBER GROWTH ACTUAL	DROPPED MEMBERS ACTUAL (including transfers)
JULY/AUG/SEPT	5	22	46
OCT/NOV/DEC	5	18	18
JAN/FEB/MAR	20	24	26
APR/MAY/JUNE	20	10	24

GOALS AND ACTUAL NEW CLUBS CUMULATIVE



GOALS AND ACTUAL MEMBERS CUMULATIVE



DROPPED CLUBS: 0	17 CLUBS OF 37 ADDED 1 OR MORE NEW MEMBERS	<p style="text-align: center;"><u>GENDER DISTRIBUTION</u></p> MALE 584 (70.11%) FEMALE 249 (29.89%) NON BINARY 0 (0.00%) PREFER NOT TO ANSWER 0 (0.00%)
<p style="text-align: center;"><u>DROPPED MEMBERS</u></p> DECEASED 24 CLUB CANCELLED 0 OTHER 90 <hr/> TOTAL 114	CLICK HERE FOR CUMULATIVE MEMBERSHIP DATA	TOTAL FAMILY UNIT MEMBERS 174 FAMILY MEMBERS PAYING HALF DUES 92